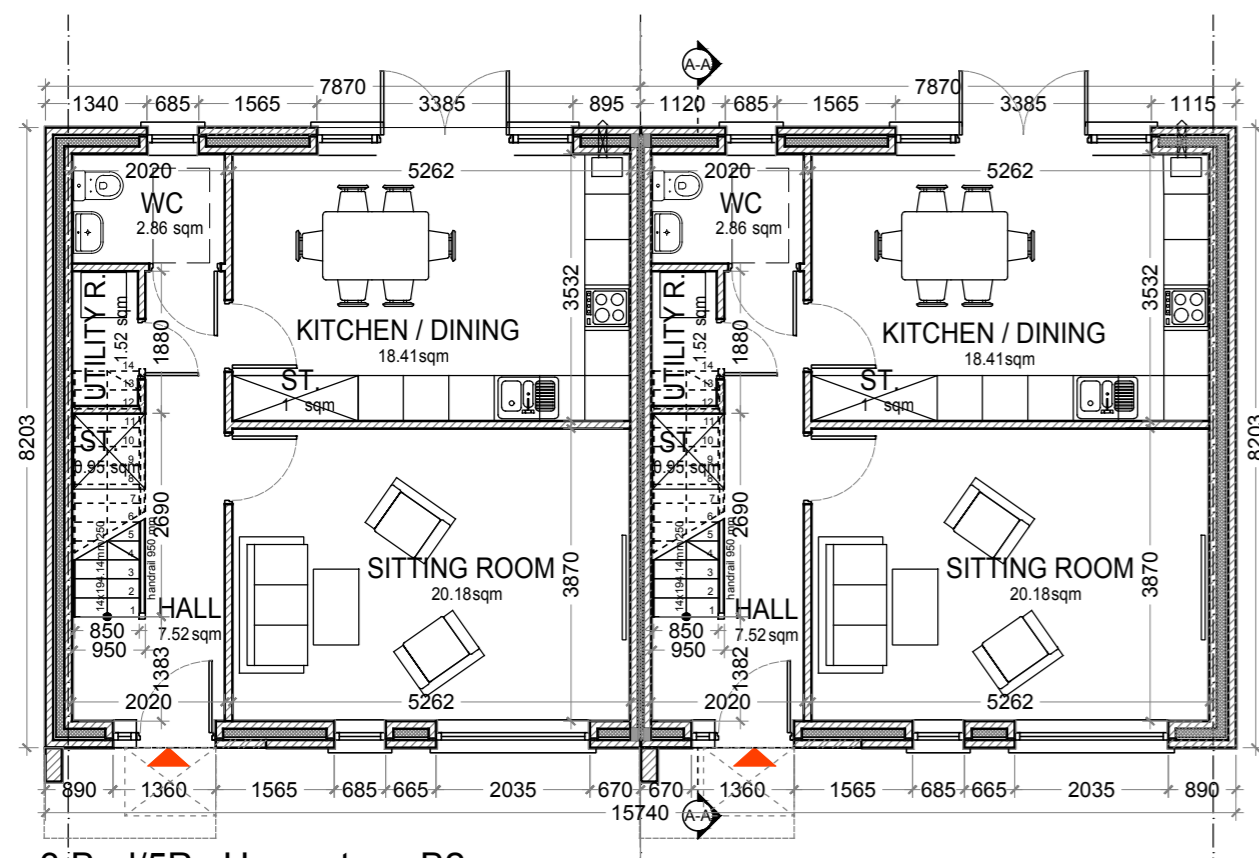
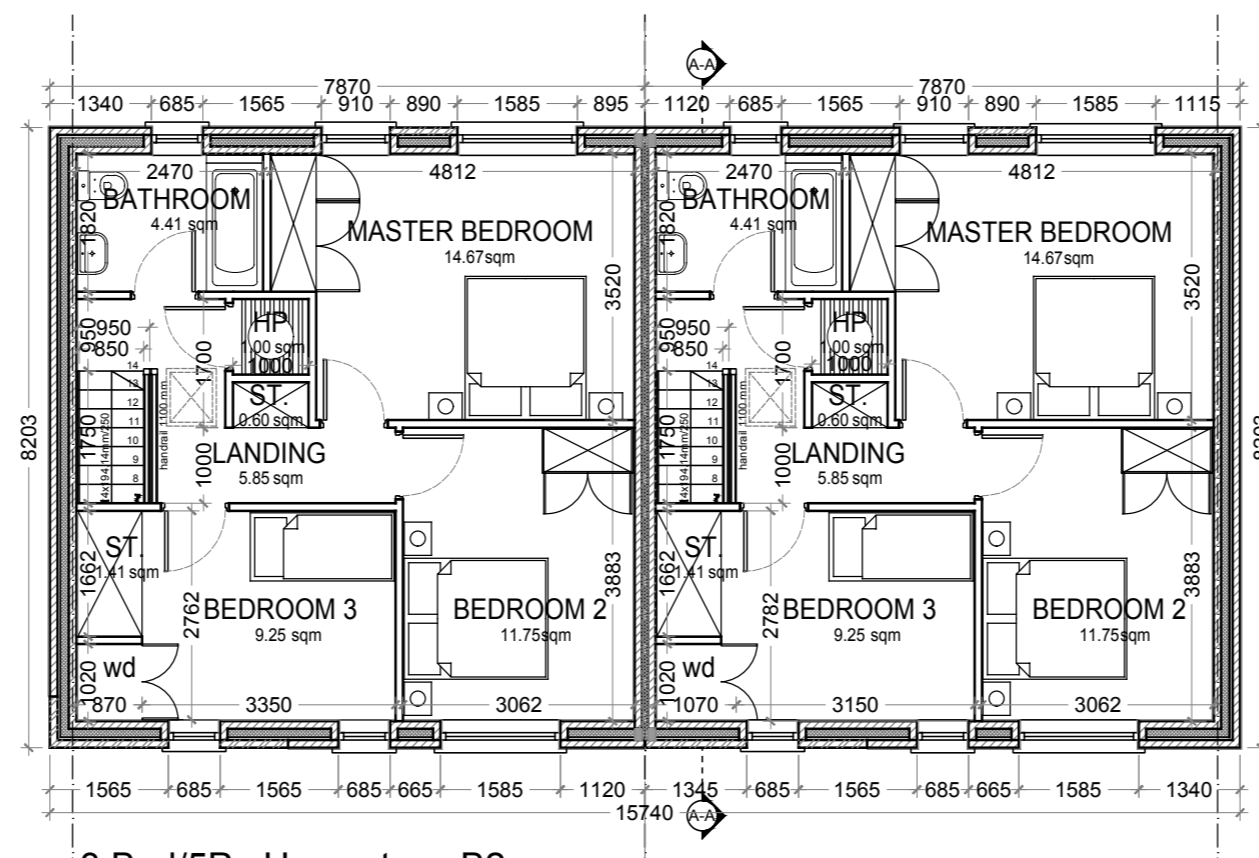


Rev.	By	Date	Description
A	BG	12/01/2018	ISSUED FOR PLANNING



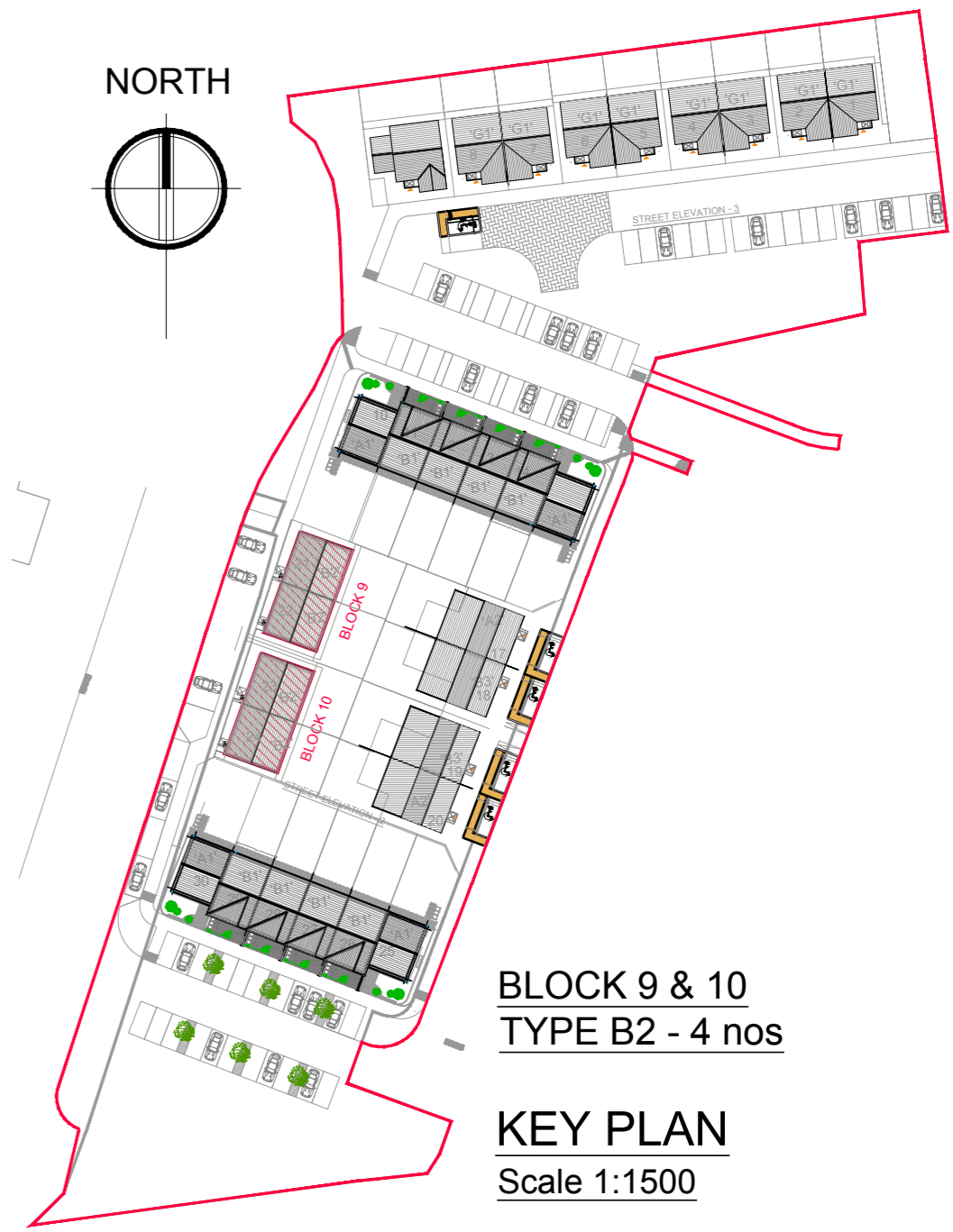
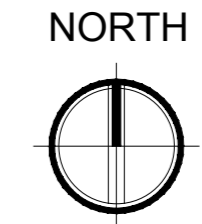
3 Bed/5P. House type B2
Ground Floor Plan
Scale 1/100

House type B2
Scale 1/100



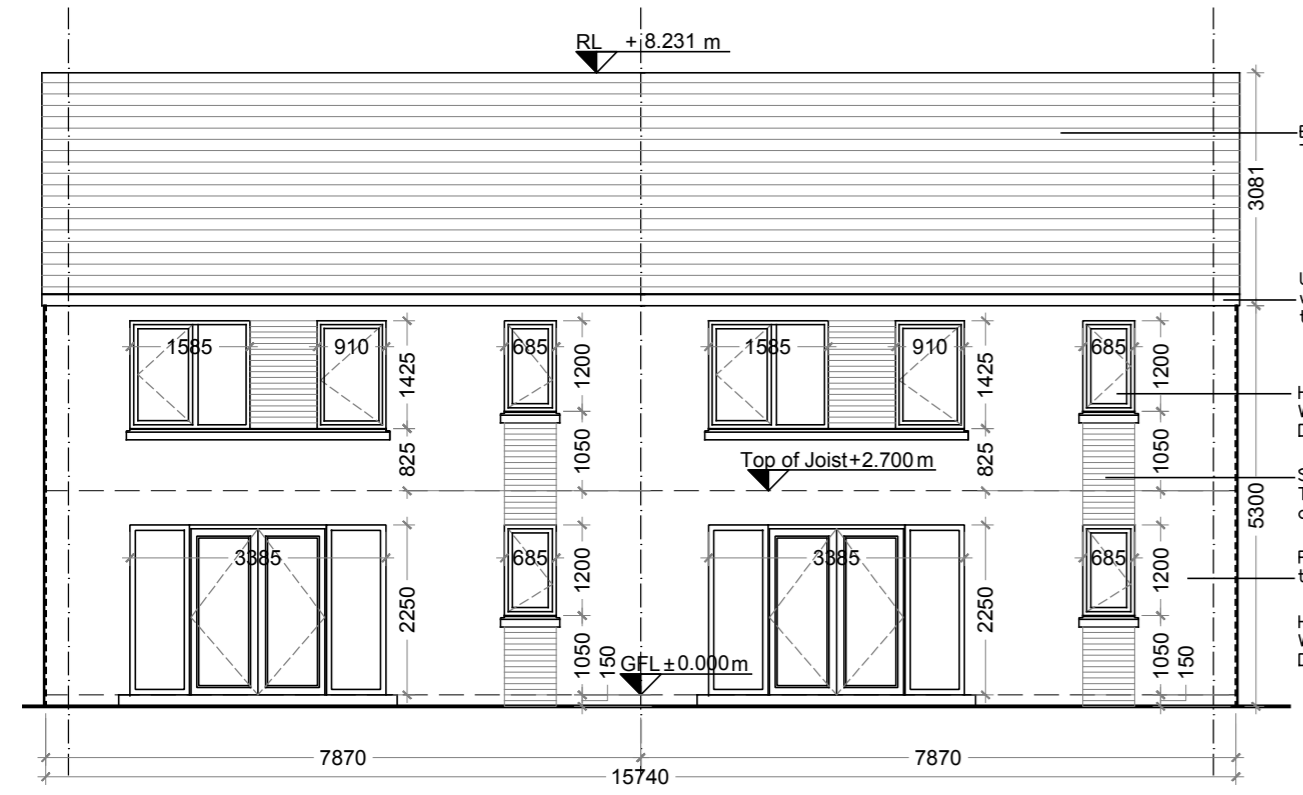
3 Bed/5P. House type B2
First Floor Plan
Scale 1/100

House type B2
Scale 1/100



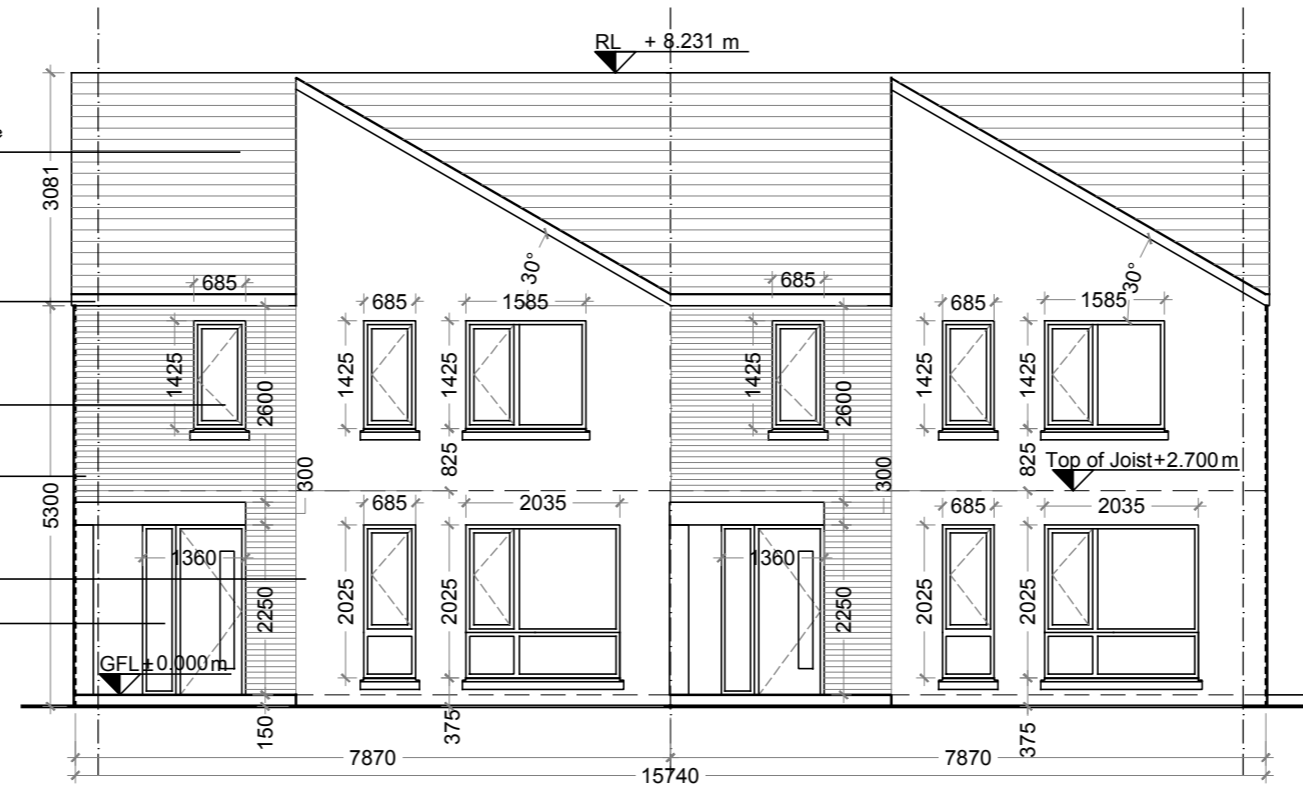
BLOCK 9 & 10
TYPE B2 - 4 nos

KEY PLAN
Scale 1:1500



Rear Elevation - House type B2
Scale 1/100

House type B2



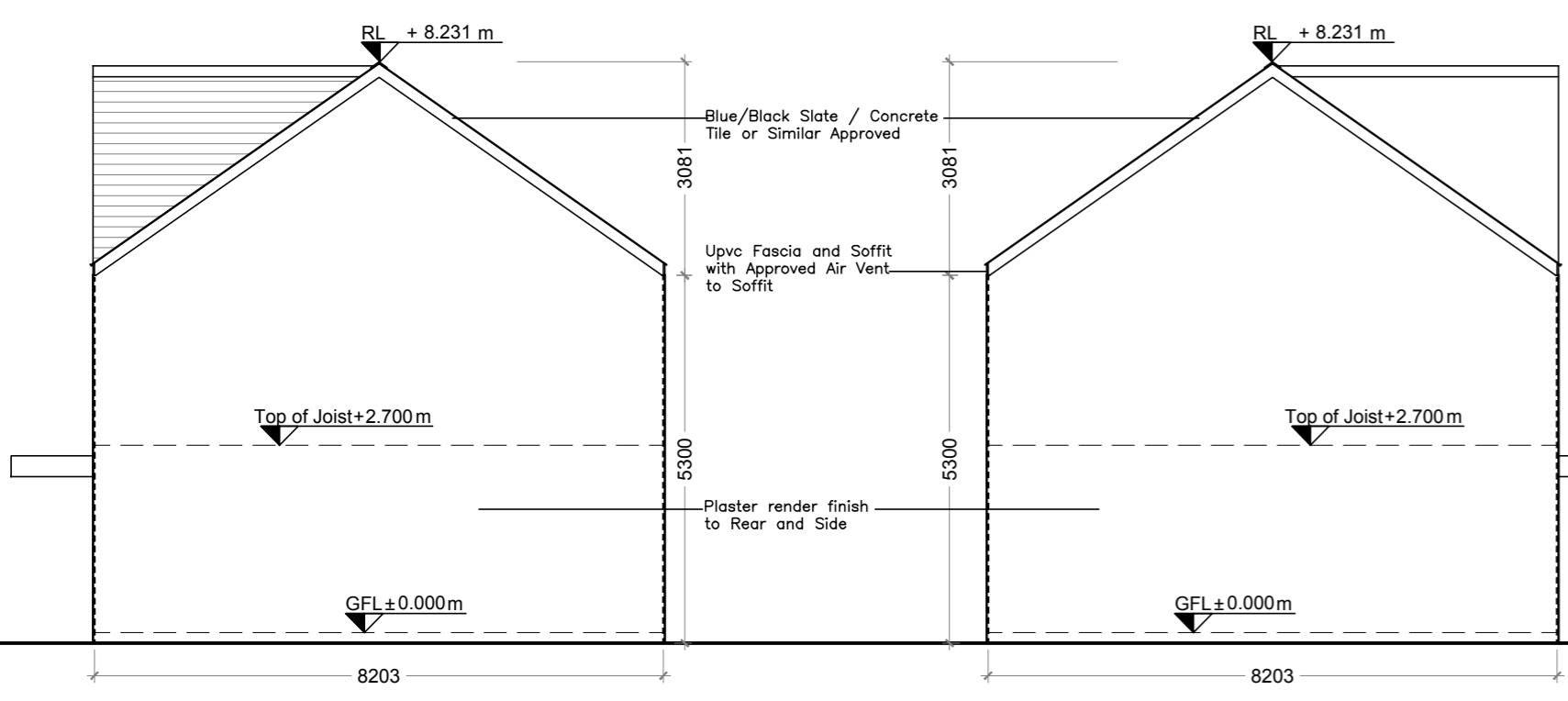
Front Elevation - House type B2
Scale 1/100

House type B2

HOUSE TYPE B2 TWO BEDROOM
Floor Area 109.59msq / 1179sqft

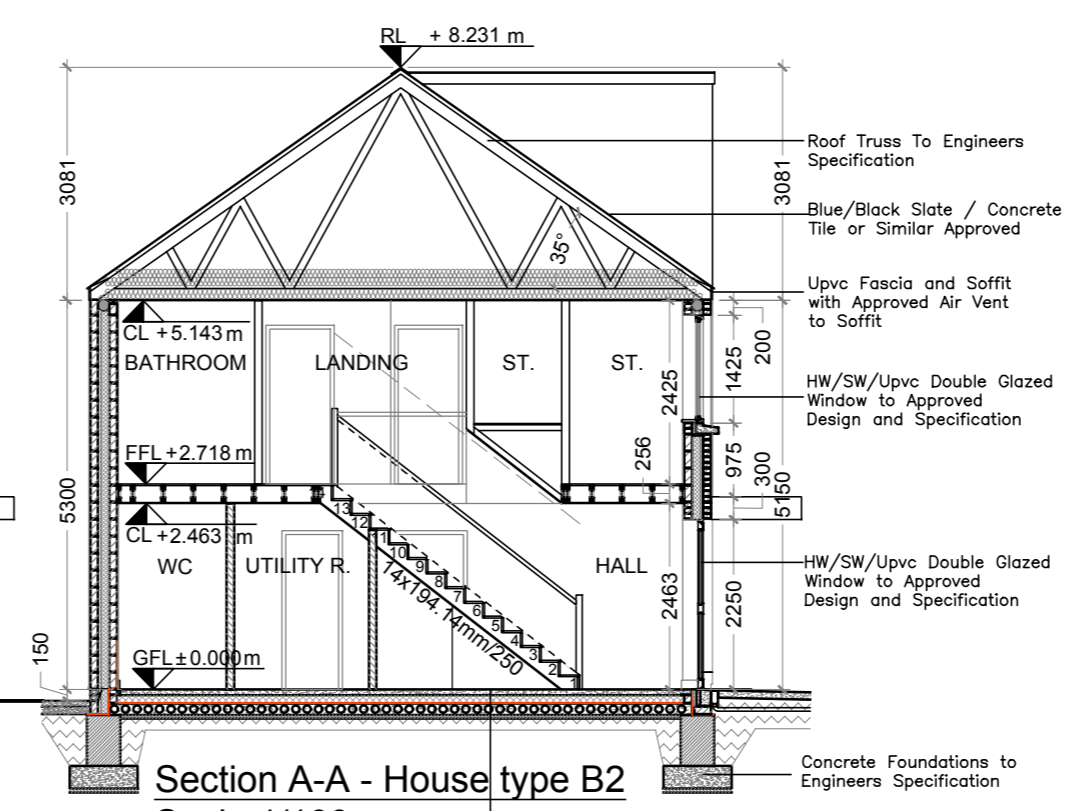
Quality Housing for sustainable communities Plan space provision						
	Dwelling Type	Gross Floor Area	Minimum Main Living room	Aggregate living area	Aggregate bedroom area	Storage
Target	3 Bed 5P house	92	13	34	32	5
Proposed	3 Bed 5P house	109.59	20.18	38.60	35.68	11.40

PLEASE NOTE:
Minimum unobstructed living room width 3.8m.
Main bedroom area 13m2, Double room 11.4m2 (2.8m minimum width), Single 7.1m2 (2.1m minimum width), minimum Private Open Space: 50m2
Storage calculations do not allow for wardrobes or kitchen cupboards but do allow for 3.5sqm of attic storage.



Side Elevation 1 - House type B2
Scale 1/100

Side Elevation 2 - House type B2
Scale 1/100



Section A-A - House type B2
Scale 1/100

100mm Power Floated Concrete Floor
100mm Insulation to Comply With Current Regulations, On Radon/DPM on 50mm Sand Blinding on 150mm Compacted Layers of Hardcore

Planning Part 8

Kildare County Development Plan space provision			
	Dwelling Type	Gross Floor Area	Storage
Target	3 Bed 5P house	100	9
Proposed	3 Bed 5P house	109.59	9.00

PLEASE NOTE:
Minimum unobstructed living room width 3.8m.
Main bedroom area 13m2, Double room 11.4m2 (2.8m minimum width), Single 7.1m2 (2.1m minimum width), minimum Private Open Space: 50m2
Storage calculations do not allow for wardrobes or kitchen cupboards but do allow for 3.5sqm of attic storage.



Kildare County Council
Comhairle Contae Chill Dara

CPR Note:
All works to be carried out using proper materials which are fit for the use they are intended and for the condition in which they are to be used.

All materials used in connection with the works to comply with the Construction Products Regulation (EU) No. 305/2011 and the harmonised technical specification/standards that fall within the remit of the CPR No. 305/2011



BLOCK 9-10 (4NO. OF TYPE B2 HOUSES)
GENERAL ARRANGEMENTS DRAWINGS

Scale	Drawn	Checked	Client
A1	A2	AH	KILDARE COUNTY COUNCIL

NOTE:
FIGURED DIMENSIONS MUST BE USED IN PREFERENCE TO SCALE DIMENSIONS. ANY DIMENSIONAL DISCREPANCIES MUST BE REPORTED TO THE ARCHITECT IMMEDIATELY. THIS DRAWING REMAINS THE COPYRIGHT OF VAN DIJK ARCHITECTS. IT MUST NOT BE USED FOR ANY PURPOSES WITHOUT THE EXPRESS PERMISSION OF THE PRACTICE. DO NOT COPY OR REDISTRIBUTE THESE DRAWINGS OR ANY ADDITIONAL INFORMATION WITHOUT THE EXPRESS APPROVAL OF VAN DIJK ARCHITECTS